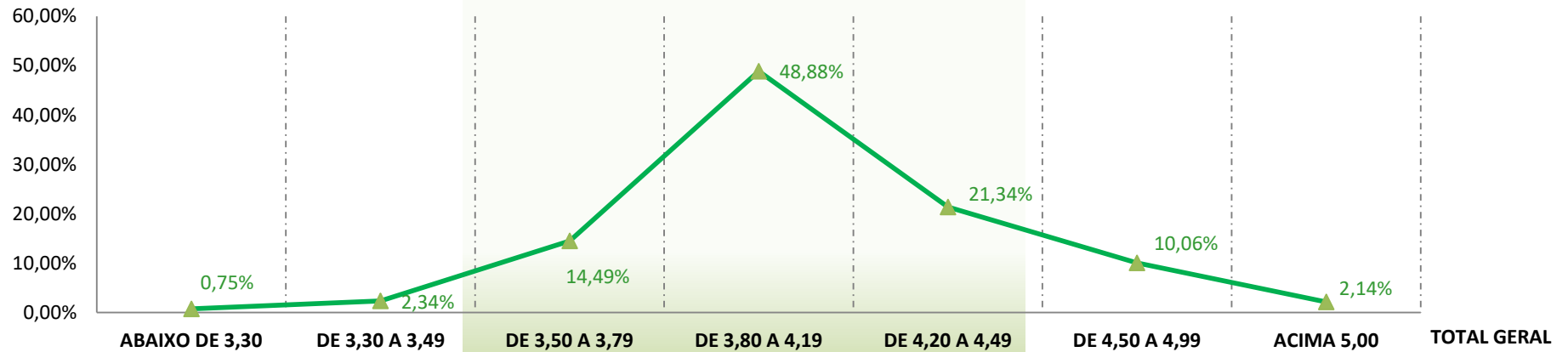
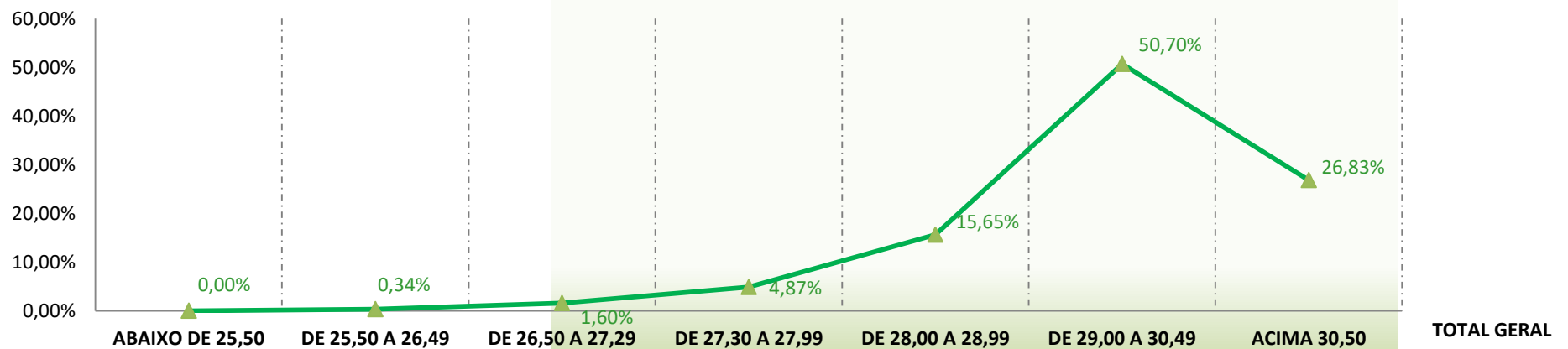


### MICRONAIRE (MIC)



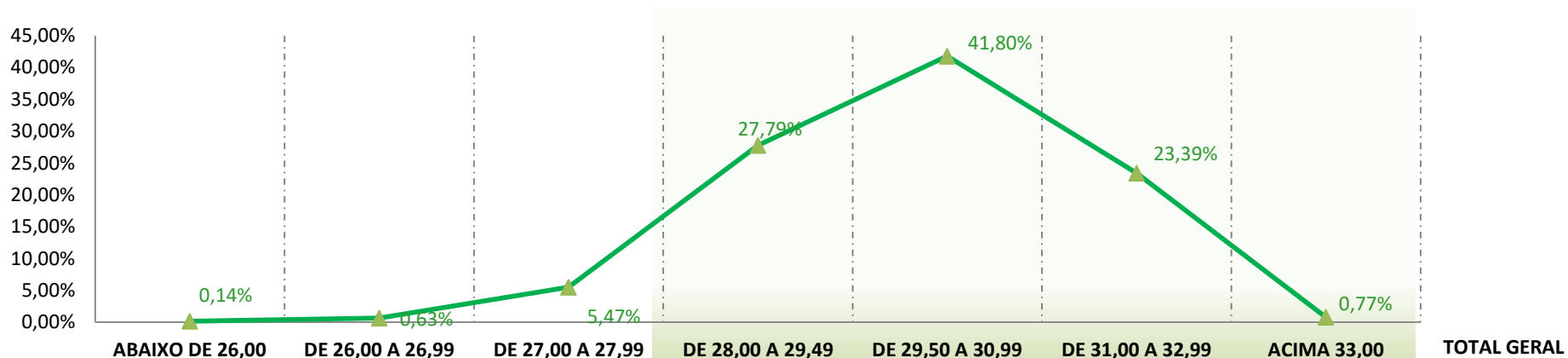
<b>Fardos</b>	2.840	8.909	55.178	186.098	81.241	38.294	8.144	<b>380.704</b>
<b>Média Ponderada</b>	3,21	3,41	3,68	4,00	4,32	4,69	5,14	<b>4,10</b>
<b>Porcentagem</b>	0,75%	2,34%	14,49%	48,88%	21,34%	10,06%	2,14%	<b>100,00%</b>

### COMPRIMENTO (LEN)



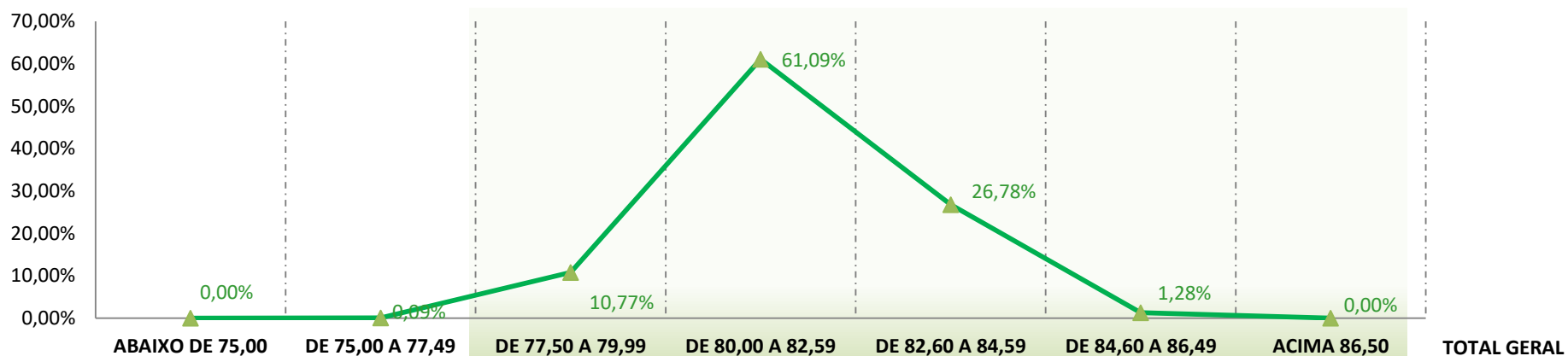
<b>Fardos</b>	13	1.300	6.085	18.555	59.596	193.013	102.142	<b>380.704</b>
<b>Média Ponderada</b>	25,50	26,16	27,02	27,69	28,56	29,78	31,13	<b>29,80</b>
<b>Porcentagem</b>	0,00%	0,34%	1,60%	4,87%	15,65%	50,70%	26,83%	<b>100,00%</b>

### RESISTÊNCIA (STR)



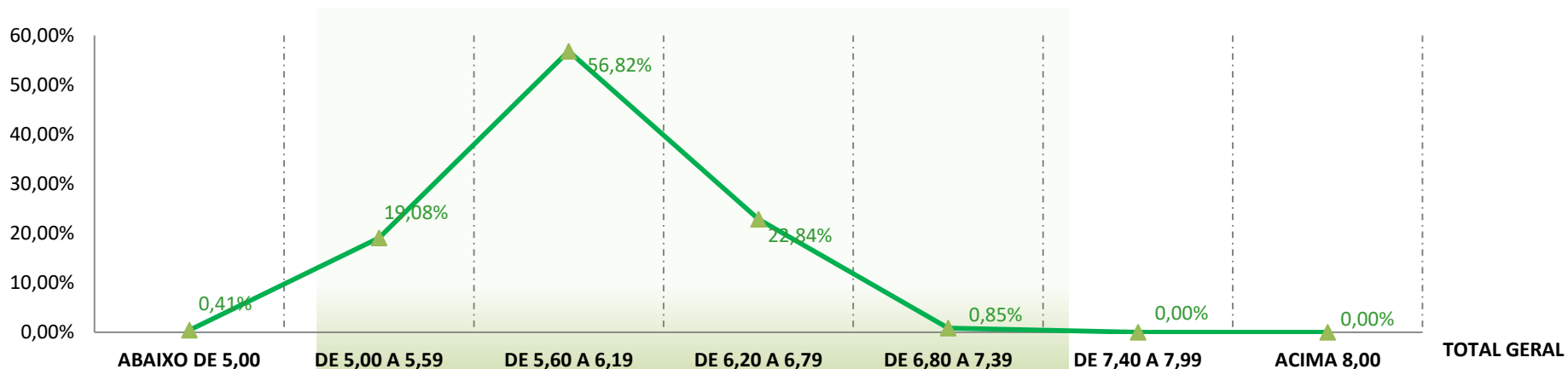
<b>Fardos</b>	549	2.415	20.827	105.787	159.130	89.064	2.932	<b>380.704</b>
<b>Média Ponderada</b>	25,6	26,6	27,5	28,8	30,2	31,7	33,4	<b>30,0</b>
<b>Porcentagem</b>	0,14%	0,63%	5,47%	27,79%	41,80%	23,39%	0,77%	<b>100,00%</b>

### UNIFORMIDADE (UNF)



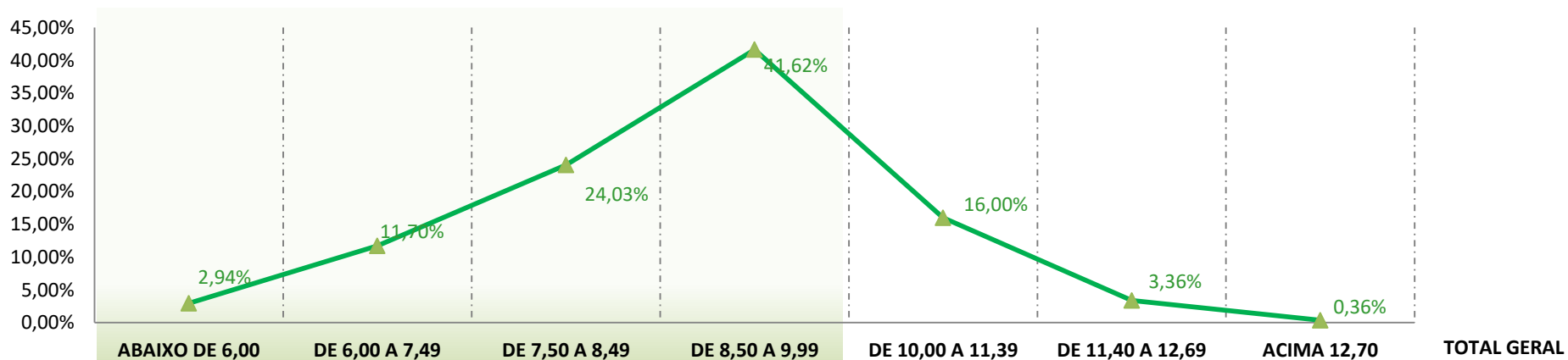
<b>Fardos</b>	0	352	40.987	232.555	101.939	4.869	2	<b>380.704</b>
<b>Média Ponderada</b>	0,0	77,2	79,3	81,4	83,2	84,9	86,6	<b>81,7</b>
<b>Porcentagem</b>	0,00%	0,09%	10,77%	61,09%	26,78%	1,28%	0,00%	<b>100,00%</b>

### ALONGAMENTO (ELG)



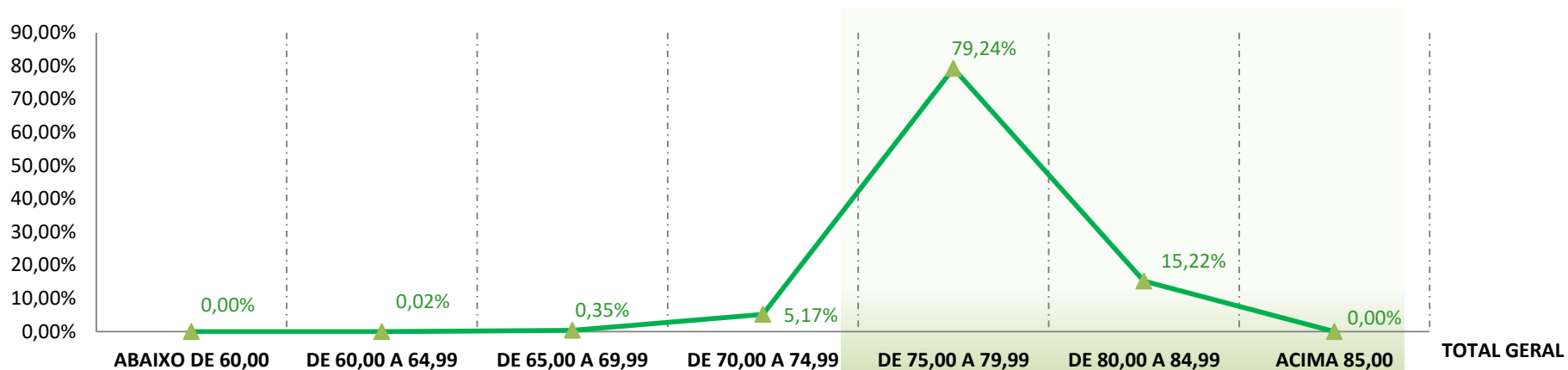
	ABAIXO DE 5,00	DE 5,00 A 5,59	DE 5,60 A 6,19	DE 6,20 A 6,79	DE 6,80 A 7,39	DE 7,40 A 7,99	ACIMA 8,00	TOTAL GERAL
Fardos	1.559	72.652	216.308	86.957	3.222	6	0	<b>380.704</b>
Média Ponderada	5,0	5,4	5,8	6,4	6,9	7,4	0,0	<b>5,9</b>
Porcentagem	0,41%	19,08%	56,82%	22,84%	0,85%	0,00%	0,00%	<b>100,00%</b>

### ÍNDICE DE FIBRAS CURTAS (SFI)



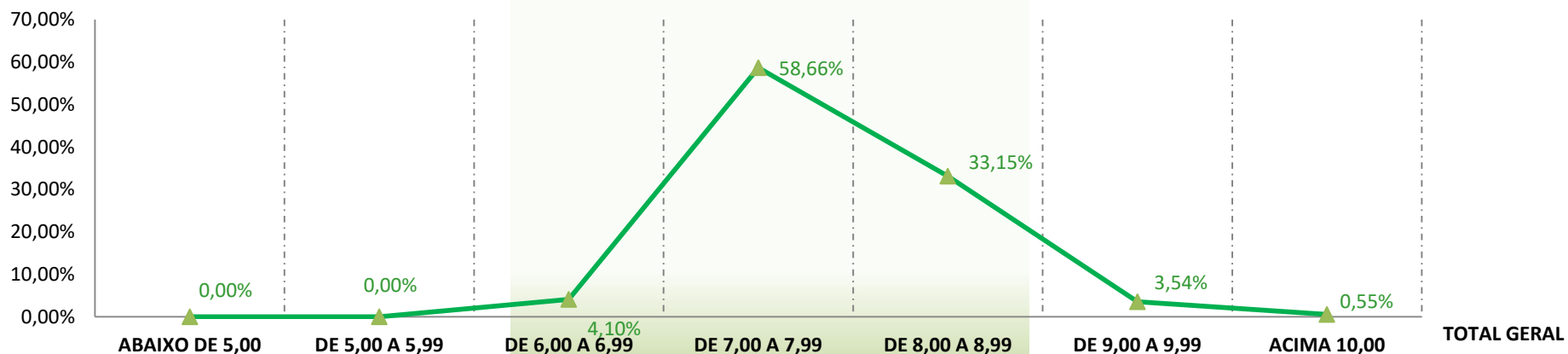
	ABAIXO DE 6,00	DE 6,00 A 7,49	DE 7,50 A 8,49	DE 8,50 A 9,99	DE 10,00 A 11,39	DE 11,40 A 12,69	ACIMA 12,70	TOTAL GERAL
Fardos	11.180	44.554	91.466	158.463	60.903	12.774	1.364	<b>380.704</b>
Média Ponderada	5,5	6,9	8,0	9,1	10,5	11,8	13,0	<b>8,8</b>
Porcentagem	2,94%	11,70%	24,03%	41,62%	16,00%	3,36%	0,36%	<b>100,00%</b>

### GRAU DE REFLECTÂNCIA (RD)



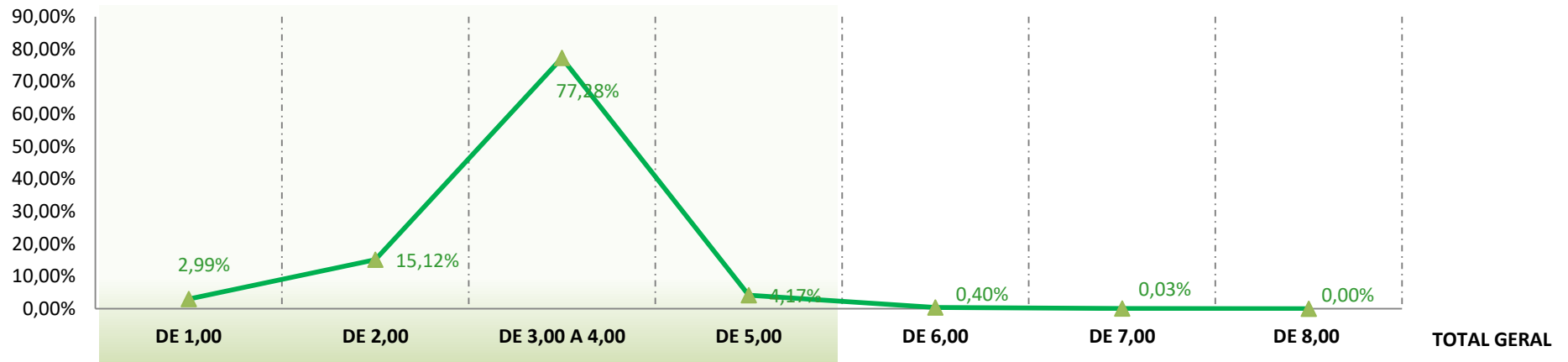
<b>Fardos</b>	1	59	1.328	19.700	301.679	57.937	0	<b>380.704</b>
<b>Média Ponderada</b>	59,2	64,0	67,8	74,0	77,8	80,7	0,0	<b>78,0</b>
<b>Porcentagem</b>	0,00%	0,02%	0,35%	5,17%	79,24%	15,22%	0,00%	<b>100,00%</b>

### GRAU DE AMARELAMENTO (+B)



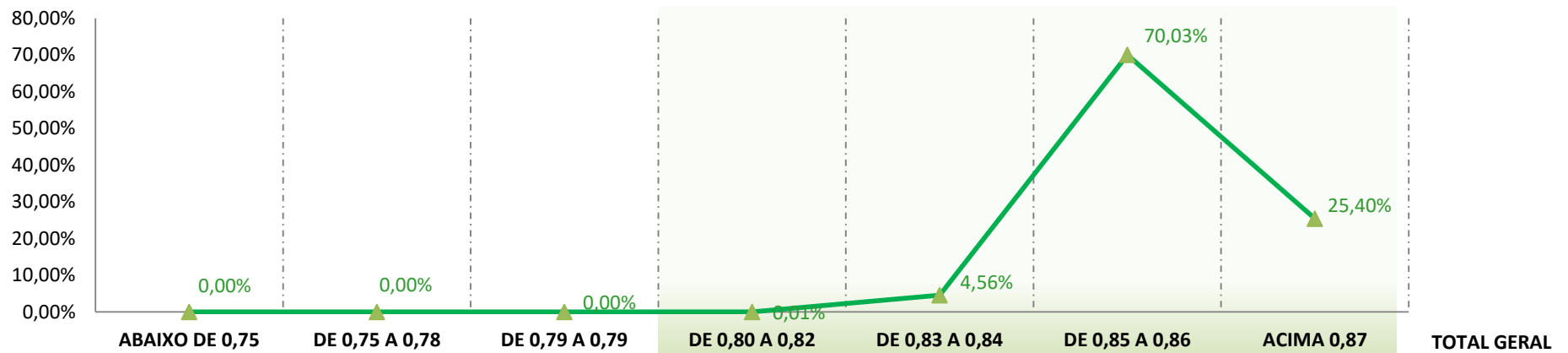
<b>Fardos</b>	0	2	15.618	223.308	126.206	13.492	2.078	<b>380.704</b>
<b>Média Ponderada</b>	0,0	5,9	6,7	7,5	8,3	9,2	11,0	<b>7,8</b>
<b>Porcentagem</b>	0,00%	0,00%	4,10%	58,66%	33,15%	3,54%	0,55%	<b>100,00%</b>

### GRAU DE FOLHA (LEAF)



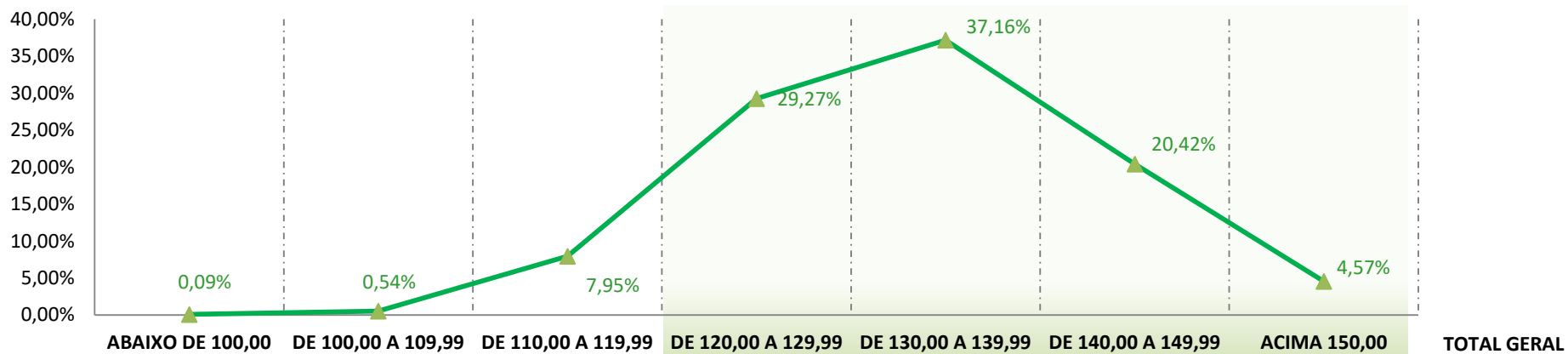
	DE 1,00	DE 2,00	DE 3,00 A 4,00	DE 5,00	DE 6,00	DE 7,00	DE 8,00	TOTAL GERAL
Fardos	11.370	57.580	294.220	15.857	1.536	132	9	<b>380.704</b>
Média Ponderada	1	2	3	5	6	7	8	<b>3</b>
Porcentagem	2,99%	15,12%	77,28%	4,17%	0,40%	0,03%	0,00%	<b>100,00%</b>

### MATURIDADE (MAT)



	ABAIXO DE 0,75	DE 0,75 A 0,78	DE 0,79 A 0,79	DE 0,80 A 0,82	DE 0,83 A 0,84	DE 0,85 A 0,86	ACIMA 0,87	TOTAL GERAL
Fardos	0	0	0	25	17.367	266.612	96.700	<b>380.704</b>
Média Ponderada	0,00	0,00	0,00	0,82	0,84	0,86	0,87	<b>0,86</b>
Porcentagem	0,00%	0,00%	0,00%	0,01%	4,56%	70,03%	25,40%	<b>100,00%</b>

### ÍNDICE DE FIABILIDADE (SCI)



<b>Fardos</b>	332	2.050	30.265	111.440	141.488	77.721	17.408	<b>380.704</b>
<b>Média Ponderada</b>	96	107	116	125	134	144	153	<b>133</b>
<b>Porcentagem</b>	0,09%	0,54%	7,95%	29,27%	37,16%	20,42%	4,57%	<b>100,00%</b>